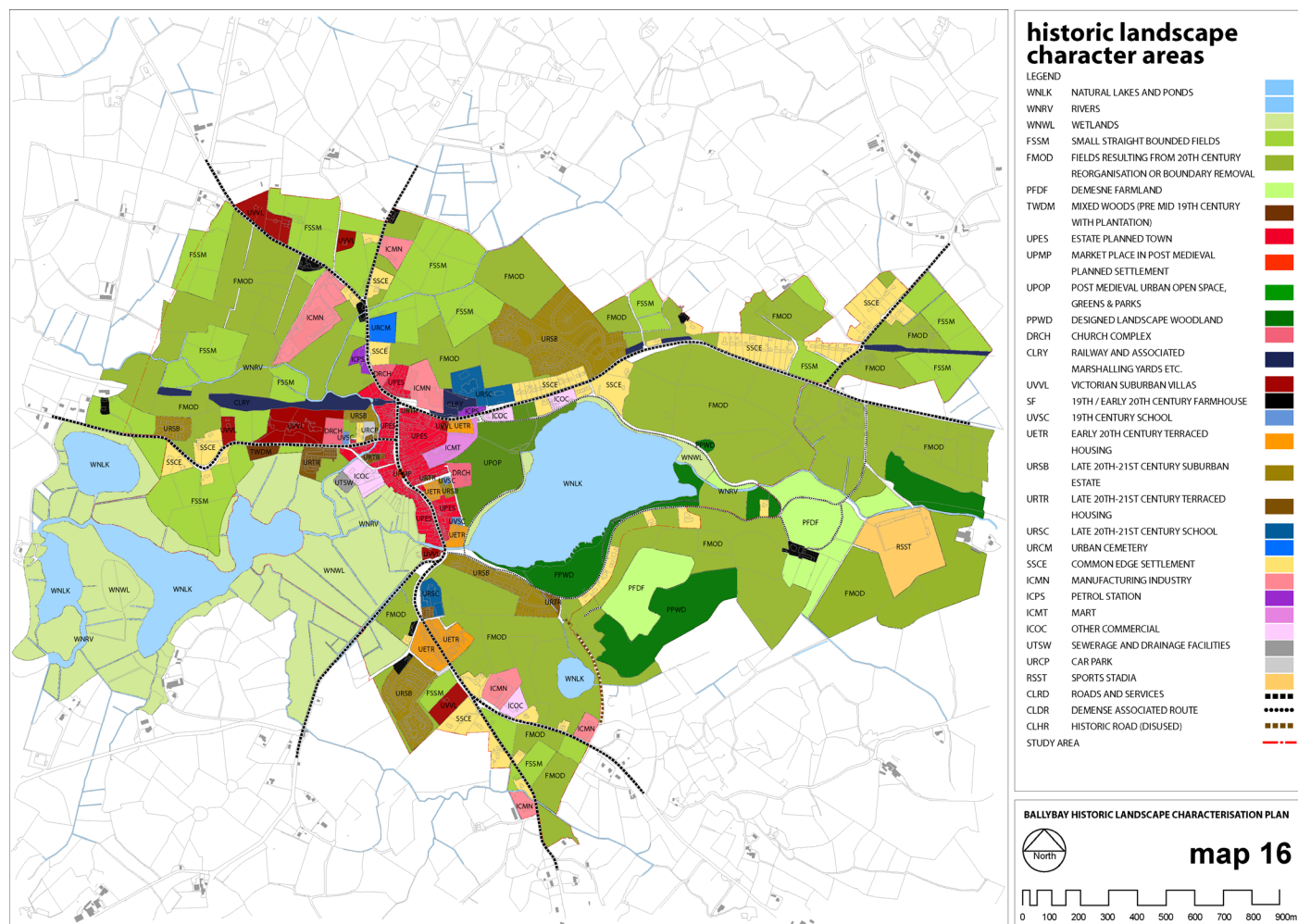


BALLYBAY HISTORIC LANDSCAPE CHARACTERISATION PLAN

BALLYBAY, CO. MONAGHAN

Historic Landscape Characterisation Plan
 Client: Monaghan County Council in Partnership with the Heritage Council
 Plan Preparation 2009
 Adopted 2010



Sheridan Woods Architects + Urban Planners in association with Eithne Verling, Archaeologist were commissioned by Monaghan County Council in Partnership with the Heritage Council to prepare the Ballybay Historic Landscape Characterisation Plan.

Ballybay is a small town in the County of Monaghan which largely developed in the 18th century on foot of the then buoyant linen industry. The town is characterised by its undulating topography, its plantation layout comprising a Market Square from which the Main Street extends and views to Lough Major, Rectory Lake and their associated wetlands to the east and west respectively. The town comprises several notable buildings including a fine Market House, three church buildings and a number of ornate commercial buildings as well as more modest townhouse structures typical of Irish market towns.

The Ballybay Historic Landscape Characterisation Plan identifies the historic built and natural landscape elements which contribute to the character and time

depth of the town. The survey stage of the plan included a detailed inventory of all buildings within the survey area and comprising photographic and drawn records. Buildings of significance or typical of a particular typology in the town were also described in written text.

Having collated the survey and analysis data, the plan identified development strategies and guidance, opportunity sites and heritage projects which sought to protect, enhance and promote the historic character of the town whilst providing for the future development and expansion of the town.

The development strategies included the development of identifiable neighbourhoods which extended to the existing street pattern and centred on a network of connected parks. Development guidance focused on the inappropriate repairs and modifications to buildings that occurred over the last century and how these could be undertaken in a manner more sensitive to the historic character of the town.

BALLYBAY HISTORIC LANDSCAPE CHARACTERISATION PLAN

BALLYBAY, CO. MONAGHAN

Historic Landscape Characterisation Plan
 Client: Monaghan County Council in Partnership with the Heritage Council
 Plan Preparation 2009
 Adopted 2010



Building Typologies on Main Street



Extension of Existing Street Network



Infill Development Guidance